

PROJECT SPACE

JESS RITTER

FEBRUARY 8 - 24, 2024



## ***Coalescence: Abstract Landscapes in Textile***

One stitch after another, minutes become hours. Each tapestry is constructed with various yarns, layering weft stitches one row at a time; This slowness allows room in the process for each design to shift and change as it is being developed. The textile landscapes grow into something unique and sometimes unexpected. There is no definitive subject or imagery, only implications. Every tapestry is meant to be interpreted personally by the viewer, with the only intention being a sense of peacefulness and balance in the implied scenes.

### **About Jess Ritter**

Jess Ritter is a self-taught artist, working primarily in ceramics and textile art. Drawn to mediums that have a multifaceted and detailed creative process, she finds peace in the tedium. When the creative process is slow and meticulous, each step allows for new ideas and inspiration to affect the outcome of the final piece. In 2020 Jess discovered loom weaving and it has since become a focus in her artistic practice. Each step in creating a tapestry requires unique skills, opening doors to new techniques. Jess continues to follow inspiration in new mediums to create artwork that brings them together in unique and beautiful ways.



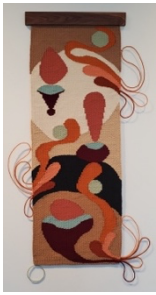
*Nesting*  
Embroidery  
26 x 16 inches  
2024



*Amoebas 3, 4, & 5*  
Embroidery  
Sizes Variable  
2024



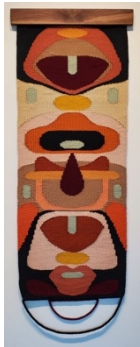
*Cultivate*  
Textile and spalted tamarind  
48 x 24 inches  
2024



*Cumulus*  
Textile and walnut  
54 ½ x 28 ½ inches  
2024



*Coalescence 1 & 2*  
Textile and purple heart  
45 x 19 inches each  
2024



*U.W.O Unidentified Woven Object*  
Textile and walnut  
54 ½ x 20 inches  
2024



*Amoebas 1 & 2*  
Embroidery  
Sizes Variable  
2024

## **DECENNIAL**

by Lin Larson, Artist and Writer

There was a moment of disbelief as Jess Ritter and I reflected on how long we have known one another; my jaw literally dropped. Nearly a decade? How incredible! The passage of time, as unavoidable as it is, never fails to catch me off-guard. One benefit to sharing all these years with Jess is having the pleasure of witnessing her artistic growth and evolution. In an effort, perhaps intentional or accidental, to spite that inexorable march of time, Jess is drawn to creative endeavors that implore the viewer to slow down.

Weaving, in particular, with its historical connections to women's work and the home, generates a warm and soothing atmosphere. When Jess started creating woven works, the focus and intent employed in her practice allowed for a rapid development of skill and style characterized by her weaving method. The tedious process, though unspoken, is apparent in the closely woven fibers and seamless transitions between hues and textures.

*Coalescence: Abstract Landscapes in Textile* combines the fibrous products of nature with rhythmic actions in colors echoing dusk and dawn. With these clever color combinations and the innate repetition in the criss-crossing fibers, Jess imbues her woven work with a meditative quality, encouraging her audience to take a breath and absent themselves from the quickening pace of life. I have the distinct advantage of knowing Jess and how effectively these works resonate with the artist herself. Through this exhibit, Jess embraces the ability to bask in serene, yet fleeting moments captured in her intertwined fiber works.

*Price list available upon request*